

# DOCUMENT 5.20.1.2

## Cumulative Developments

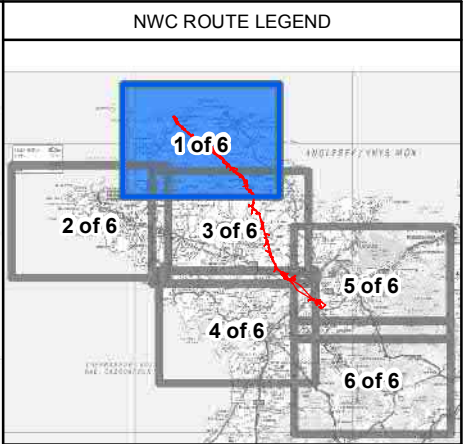
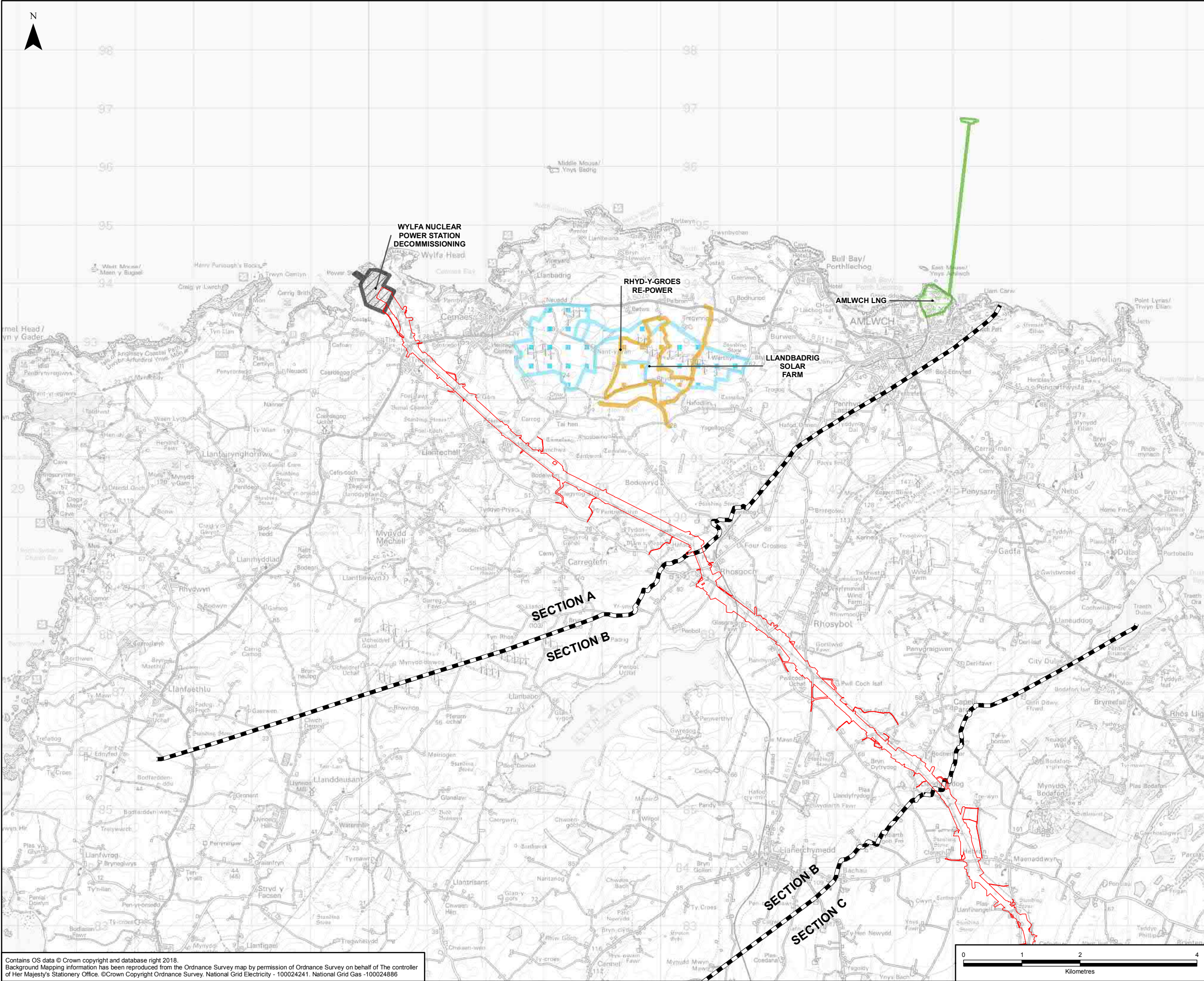
### Chapter 20 – Figure 2

National Grid (North Wales Connection Project)

*Regulation 5(2)(a) including (l) and (m) of the Infrastructure Planning  
(Applications: Prescribed Forms and Procedure) Regulations 2009*







**LEGEND**

**PROPOSED DEVELOPMENT:**

- ORDER LIMITS
- SECTION CUTLINES

**CUMULATIVE DEVELOPMENTS:**

- THIRD MENAI CROSSING
- A487 CAERNARFON TO BONTNEWYDD BYPASS
- A55 ABERGWYNGREGYN TO TA'I'R MEIBION IMPROVEMENT
- A55 JUNCTION 15 & 16 IMPROVEMENTS
- AMLWCH LNG
- ANGLESEY ECO PARK
- CAERNARFON BRICKWORKS QUARRY
- DINORWIG CABLES
- GLYN RHONWY PUMPED STORAGE
- GREENWIRE
- GRWP LLANDRILLO MENAI LLANGFNI CAMPUS
- HOLYHEAD PORT EXPANSION
- HOLYHEAD WATERFRONT REDEVELOPMENT
- HOLYHEAD DEEP
- LLANBADRIG SOLAR FARM
- MENAI SCIENCE PARK
- NANT Y GARTH LANDFILL
- PARC CYBI
- PENRHOS LEISURE VILLAGE
- RHYD-Y-GROES RE-POWER
- UNDERGROUND GRID CONNECTION BETWEEN GLYN RHONWY PUMPED STORAGE DEVELOPMENT AND PENTIR SUBSTATION
- WEST ANGLESEY DEMONSTRATION ZONE
- WYLFA NUCLEAR POWER STATION DECOMMISSIONING

NOTES					
CODLING WIND PARK AND EXTENSION IS NOT SHOWN.					
0	28/08/2018	ENVIRONMENTAL STATEMENT	JB	JK	CC
Rev	Date	Description	GIS	Chk	App

**nationalgrid**

Scheme: NORTH WALES CONNECTION PROJECT

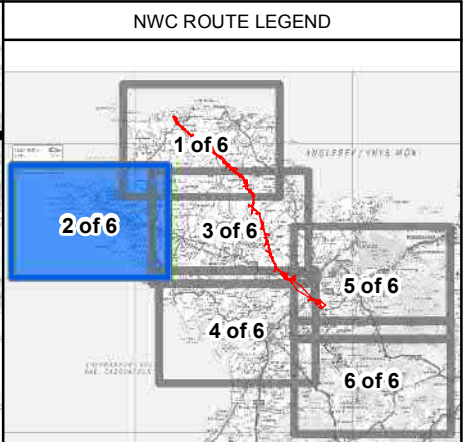
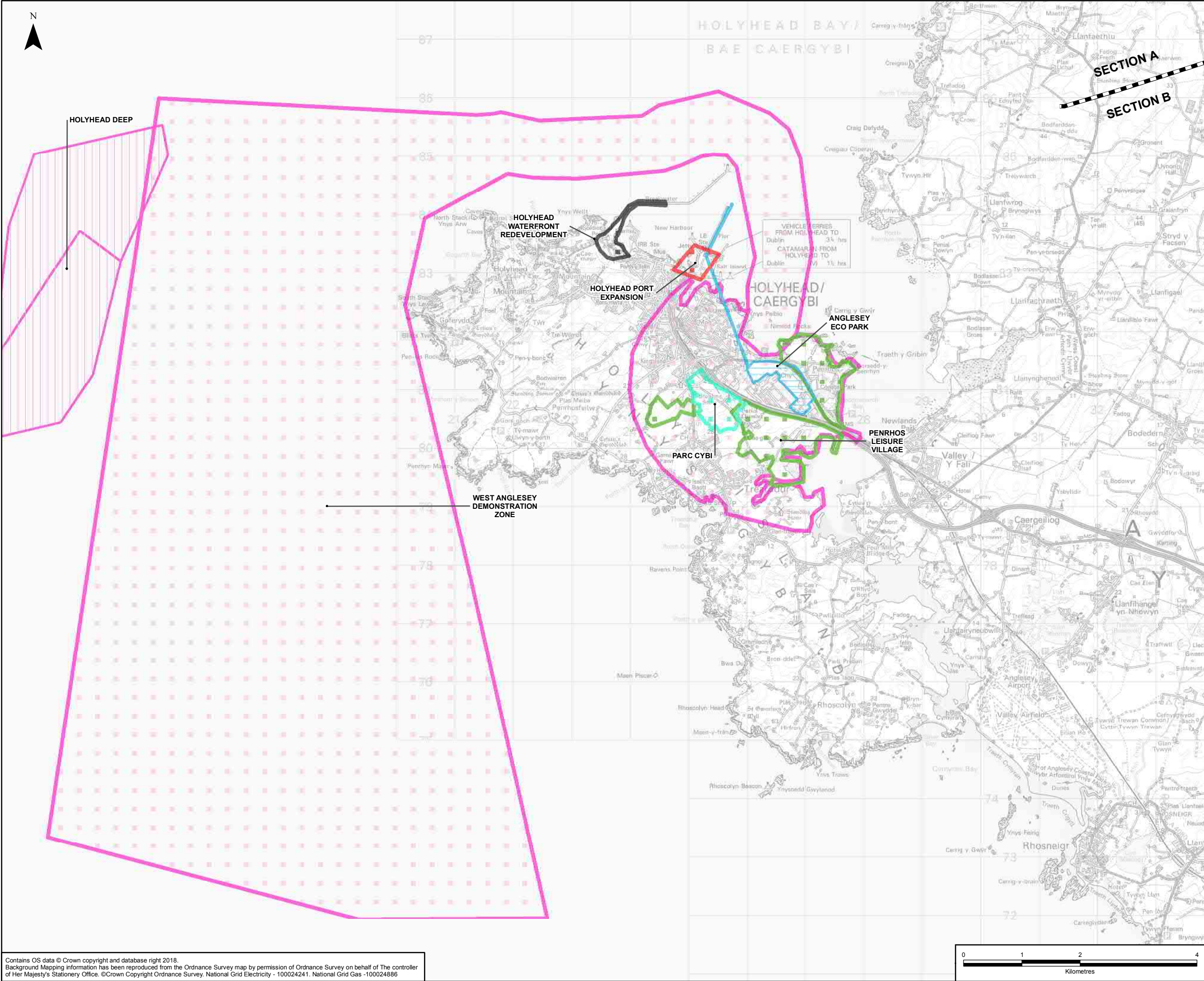
Document Number: 5.20.1.2

Document Title: FIGURE 20.2 CUMULATIVE DEVELOPMENTS

Creator: JB	Date: 28/08/2018	Checker: JK	Date: 28/08/2018	Approver: CC	Date: 28/08/2018
Document Type: FIGURE	Scale: 1:60,000	Format: A3	Sheets: 1 of 6	Rev: 0	

Contains OS data © Crown copyright and database right 2018.  
Background Mapping information has been reproduced from the Ordnance Survey map by permission of Ordnance Survey on behalf of The controller of Her Majesty's Stationery Office. © Crown Copyright Ordnance Survey. National Grid Electricity - 100024241. National Grid Gas -100024886





**LEGEND**

**PROPOSED DEVELOPMENT:**

- SECTION CUTLINES

**CUMULATIVE DEVELOPMENTS:**

- THIRD MENAI CROSSING
- A487 CAERNARFON TO BONTNEWYDD BYPASS
- A55 ABERGWYNGREGYN TO TAI'R MEIBION IMPROVEMENT
- A55 JUNCTION 15 & 16 IMPROVEMENTS
- AMLWCH LNG
- ANGLESEY ECO PARK
- CAERNARFON BRICKWORKS QUARRY
- DINORWIG CABLES
- GLYN RHONWY PUMPED STORAGE
- GREENWIRE
- GRWP LLANDRILLO MENAI LLANGEFNI CAMPUS
- HOLYHEAD PORT EXPANSION
- HOLYHEAD WATERFRONT REDEVELOPMENT
- HOLYHEAD DEEP
- LLANDBADRIG SOLAR FARM
- MENAI SCIENCE PARK
- NANT Y GARTH LANDFILL
- PARC CYBI
- PENRHOS LEISURE VILLAGE
- RHYD-Y-GROES RE-POWER
- UNDERGROUND GRID CONNECTION
- BETWEEN GLYN RHONWY PUMPED STORAGE DEVELOPMENT AND PENTIR SUBSTATION
- WEST ANGLESEY DEMONSTRATION ZONE
- WYLFA NUCLEAR POWER STATION DECOMMISSIONING

NOTES					
CODLING WIND PARK AND EXTENSION IS NOT SHOWN.					
0	28/08/2018	ENVIRONMENTAL STATEMENT	JB	JK	CC
Rev	Date	Description	GIS	Chk	App
Scheme: NORTH WALES CONNECTION PROJECT					
Document Number: 5.20.1.2					
Document Title: FIGURE 20.2 CUMULATIVE DEVELOPMENTS					
Creator: JB	Date: 28/08/2018	Checker: JK	Date: 28/08/2018	Approver: CC	Date: 28/08/2018
Document Type: FIGURE	Scale: 1:60,000	Format: A3	Sheets: 2 of 6	Rev: 0	

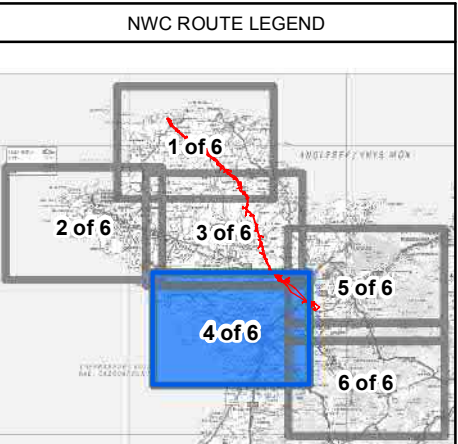
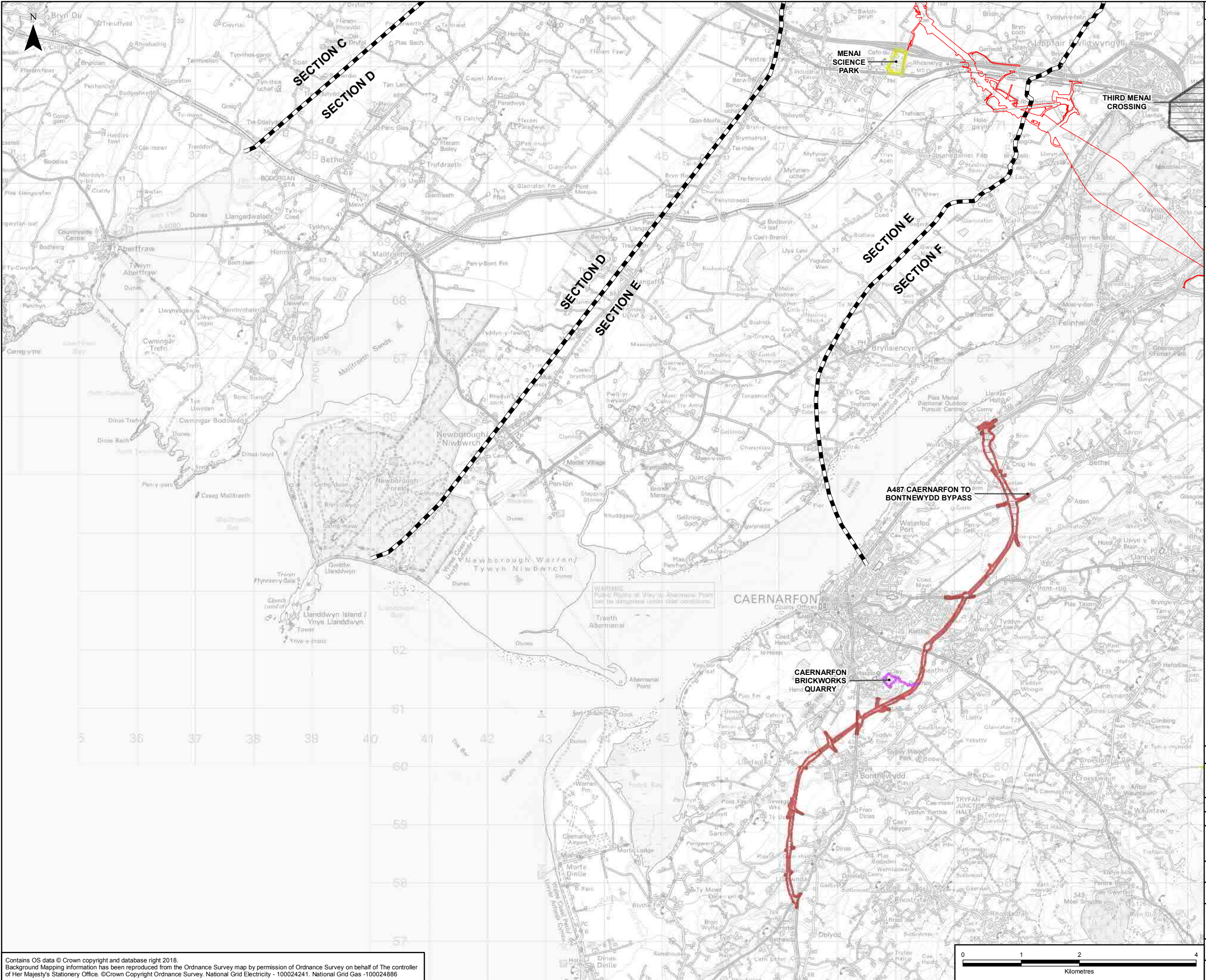












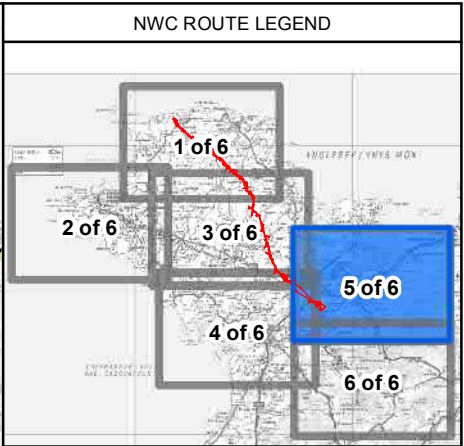
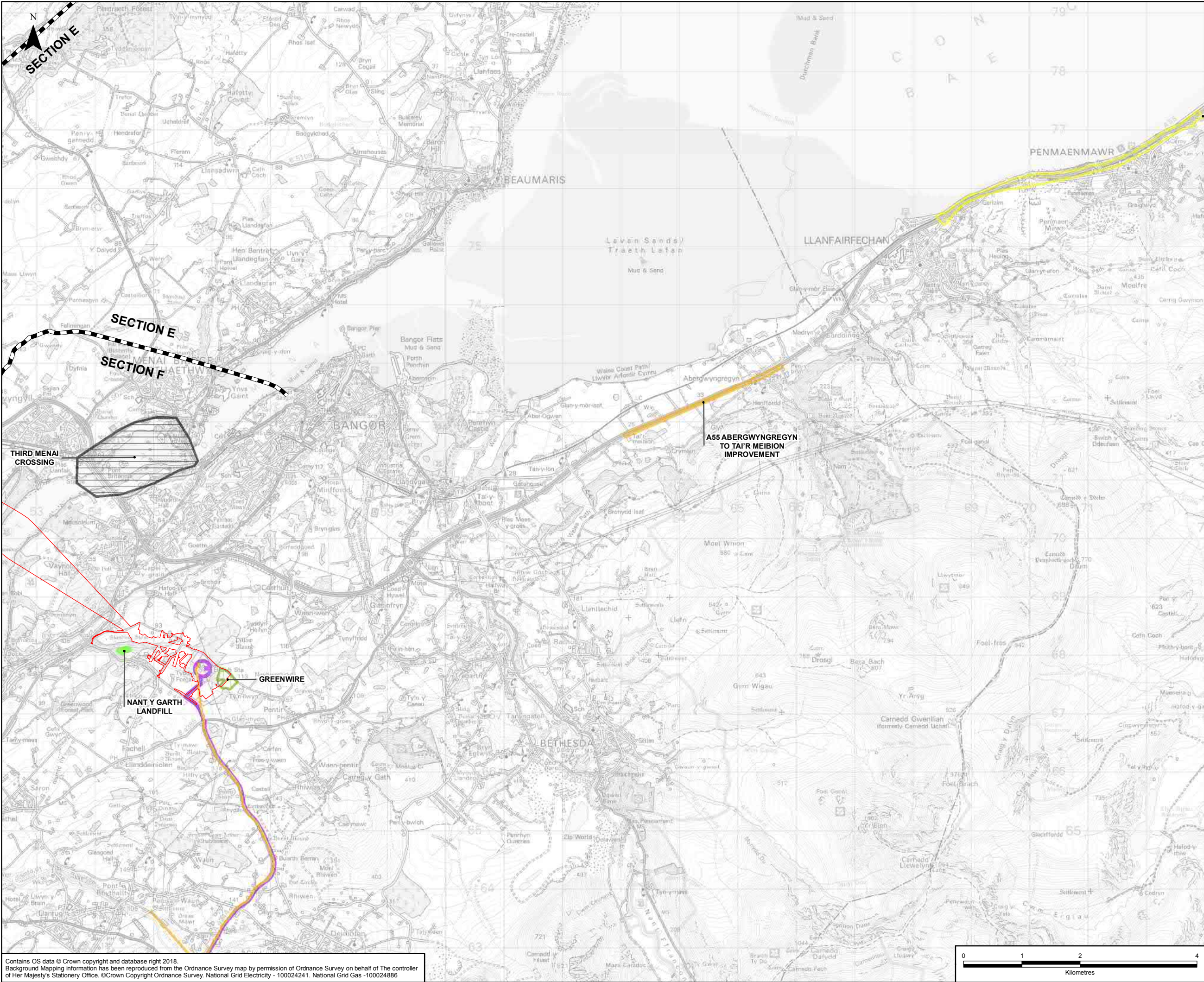
- LEGEND**
- PROPOSED DEVELOPMENT:**
- ORDER LIMITS - OPTION B
  - SECTION CUTLINES
- CUMULATIVE DEVELOPMENTS:**
- THIRD MENAI CROSSING
  - A487 CAERNARFON TO BONTNEWYDD BYPASS
  - A55 ABERGWYNGREGYN TO TA'R MEIBION IMPROVEMENT
  - A55 JUNCTION 15 & 16 IMPROVEMENTS
  - AMLWCH LNG
  - ANGLESEY ECO PARK
  - CAERNARFON BRICKWORKS QUARRY
  - DINORWIG CABLES
  - GLYN RHONWY PUMPED STORAGE
  - GREENWIRE
  - GRWP LLANDRILLO MENAI LLANGFNI CAMPUS
  - HOLYHEAD PORT EXPANSION
  - HOLYHEAD WATERFRONT REDEVELOPMENT
  - HOLYHEAD DEEP
  - LLANBADRIG SOLAR FARM
  - MENAI SCIENCE PARK
  - NANT Y GARTH LANDFILL
  - PARC CYBI
  - PENRHOS LEISURE VILLAGE
  - RHYD-Y-GROES RE-POWER
  - UNDERGROUND GRID CONNECTION BETWEEN GLYN RHONWY PUMPED STORAGE DEVELOPMENT AND PENTIR SUBSTATION
  - WEST ANGLESEY DEMONSTRATION ZONE
  - WYLFA NUCLEAR POWER STATION DECOMMISSIONING

NOTES					
CODLING WIND PARK AND EXTENSION IS NOT SHOWN.					
0	28/08/2018	ENVIRONMENTAL STATEMENT	JB	JK	CC
Rev	Date	Description	GIS	Chk	App

Scheme: NORTH WALES CONNECTION PROJECT					
Document Number: 5.20.1.2					
Document Title: FIGURE 20.2 CUMULATIVE DEVELOPMENTS					
Creator: JB	Date: 28/08/2018	Checker: JK	Date: 28/08/2018	Approver: CC	Date: 28/08/2018
Document Type: FIGURE	Scale: 1:60,000	Format: A3	Sheets: 4 of 6	Rev: 0	

Contains OS data © Crown copyright and database right 2018.  
Background Mapping information has been reproduced from the Ordnance Survey map by permission of Ordnance Survey on behalf of The controller of Her Majesty's Stationery Office. © Crown Copyright Ordnance Survey. National Grid Electricity - 100024241. National Grid Gas - 100024886

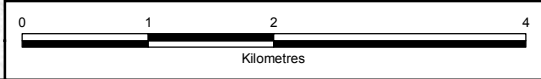




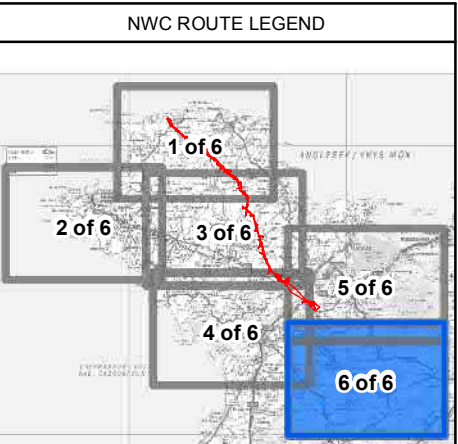
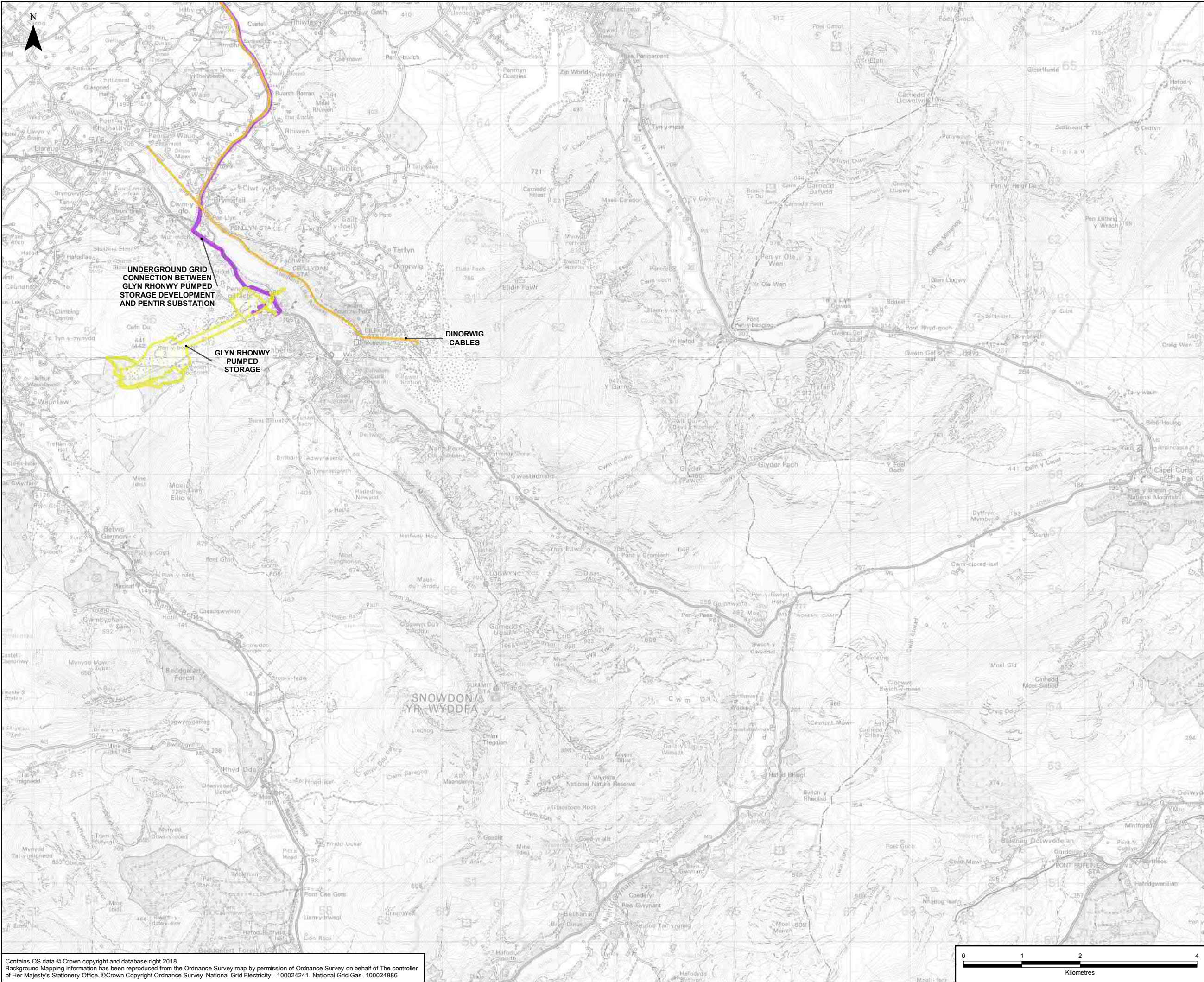
- LEGEND**
- PROPOSED DEVELOPMENT:**
- ORDER LIMITS
  - SECTION CUTLINES
- CUMULATIVE DEVELOPMENTS:**
- THIRD MENAI CROSSING
  - A487 CAERNARFON TO BONTNEWYDD BYPASS
  - A55 ABERGWYNGREGYN TO TAIR MEIBION IMPROVEMENT
  - A55 JUNCTION 15 & 16 IMPROVEMENTS
  - AMLWCH LNG
  - ANGLESEY ECO PARK
  - CAERNARFON BRICKWORKS QUARRY
  - DINORWIG CABLES
  - GLYN RHONWY PUMPED STORAGE
  - GREENWIRE
  - GRWP LLANDRILLO MENAI LLANGFNI CAMPUS
  - HOLYHEAD PORT EXPANSION
  - HOLYHEAD WATERFRONT REDEVELOPMENT
  - HOLYHEAD DEEP
  - LLANBADRIG SOLAR FARM
  - MENAI SCIENCE PARK
  - NANT Y GARTH LANDFILL
  - PARC CYBI
  - PENRHOS LEISURE VILLAGE
  - RHYD-Y-GROES RE-POWER
  - UNDERGROUND GRID CONNECTION BETWEEN GLYN RHONWY PUMPED STORAGE DEVELOPMENT AND PENTIR SUBSTATION
  - WEST ANGLESEY DEMONSTRATION ZONE
  - WYLFA NUCLEAR POWER STATION DECOMMISSIONING

NOTES					
CODLING WIND PARK AND EXTENSION IS NOT SHOWN.					
0	28/08/2018	ENVIRONMENTAL STATEMENT	JB	JK	CC
Rev	Date	Description	GIS	Chk	App
Scheme: NORTH WALES CONNECTION PROJECT					
Document Number: 5.20.1.2					
Document Title: FIGURE 20.2 CUMULATIVE DEVELOPMENTS					
Creator: JB	Date: 28/08/2018	Checker: JK	Date: 28/08/2018	Approver: CC	Date: 28/08/2018
Document Type: FIGURE	Scale: 1:60,000	Format: A3	Sheets: 5 of 6	Rev: 0	

Contains OS data © Crown copyright and database right 2018.  
Background Mapping information has been reproduced from the Ordnance Survey map by permission of Ordnance Survey on behalf of The controller of Her Majesty's Stationery Office. © Crown Copyright Ordnance Survey. National Grid Electricity - 100024241. National Grid Gas - 100024886







- LEGEND**
- CUMULATIVE DEVELOPMENTS:**
- THIRD MENAI CROSSING
  - A487 CAERNARFON TO BONTNEWYDD BYPASS
  - A55 ABERGWYNGREGYN TO TAI'R MEIBION IMPROVEMENT
  - A55 JUNCTION 15 & 16 IMPROVEMENTS
  - AMLWCH LNG
  - ANGLESEY ECO PARK
  - CAERNARFON BRICKWORKS QUARRY
  - DINORWIG CABLES
  - GLYN RHONWY PUMPED STORAGE
  - GREENWIRE
  - GRWP LLANDRILLO MENAI LLANGFN CAMPUS
  - HOLYHEAD PORT EXPANSION
  - HOLYHEAD WATERFRONT REDEVELOPMENT
  - HOLYHEAD DEEP
  - LLANBADRIG SOLAR FARM
  - MENAI SCIENCE PARK
  - NANT Y GARTH LANDFILL
  - PARC CYBI
  - PENRHOS LEISURE VILLAGE
  - RHYD-Y-GROES RE-POWER
  - UNDERGROUND GRID CONNECTION BETWEEN GLYN RHONWY PUMPED STORAGE DEVELOPMENT AND PENTIR SUBSTATION
  - WEST ANGLESEY DEMONSTRATION ZONE
  - WYLF A NUCLEAR POWER STATION DECOMMISSIONING

**NOTES**

CODLING WIND PARK AND EXTENSION IS NOT SHOWN.

0	28/08/2018	ENVIRONMENTAL STATEMENT	JB	JK	CC
Rev	Date	Description	GIS	Chk	App



Scheme: NORTH WALES CONNECTION PROJECT

Document Number: 5.20.1.2

Document Title: FIGURE 20.2 CUMULATIVE DEVELOPMENTS

Creator:	Date:	Checker:	Date:	Approver:	Date:
JB	28/08/2018	JK	28/08/2018	CC	28/08/2018

Document Type:	Scale:	Format:	Sheets:	Rev:
FIGURE	1:60,000	A3	6 of 6	0

Contains OS data © Crown copyright and database right 2018.  
Background Mapping information has been reproduced from the Ordnance Survey map by permission of Ordnance Survey on behalf of The controller of Her Majesty's Stationary Office. ©Crown Copyright Ordnance Survey. National Grid Electricity - 100024241. National Grid Gas - 100024886

